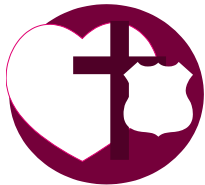
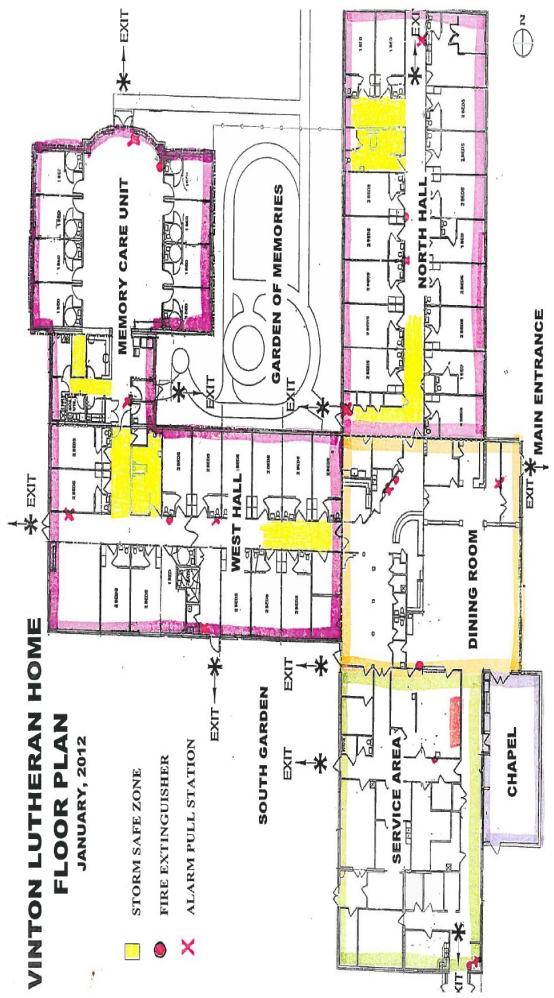


Floor Plan



Vinton Lutheran Home

1301 2nd Ave
 Vinton, IA 52349
 K.vanree@lhaa-e.org
 Web: lhaa-e.org

Facebook Page: Vinton Lutheran Home Communities

The Lutheran Home for the
 Aged Association-East

Vinton Lutheran Home Skilled Care



*"Providing Quality Christian
 Care and Service"*

Nursing Facility Rate Schedule

Skilled Private Pay, Private Room- \$274.00

Skilled Private Pay, 2 Person Room– \$258.00

Skilled Program

The Nursing Facility is certified to participate in the Medicare (Skilled) program. In order for a nursing facility to partake in the Medicare program, the facility must meet the requirements issued by the United States Secretary of Health and Human Services.

The Medicare Program is a health insurance program for people 65 years of age and older and for certain people under age 65, who are disabled.

Traditional Medicare

- ◆ **Part A**– Provides assistance for hospital, skilled nursing facility, home health care, and health maintenance expenses. The benefit includes up to 100 days following a 3-day qualifying hospital stay. The average length of stay under Medicare Part A is 15 days. Rarely does anyone utilize the full 100 days.
- ◆ **Part B**– Provides assistance with medical and some other health care related expense. Such as: Physical, Occupational, and Speech Therapy

Medicare Replacement (HMO/PPO)

HMO's and PPO's are offered by private insurance companies approved by Medicare to provide coverage. The Lutheran Home is a network provider for a variety of HMO and PPO plans. Please check with either the Administrator or Social Services.

Private Pay

The Lutheran Home also accepts Private Pay.

Rehab Services

Our professional therapy team, along with our Lutheran Home staff, specialize in the treatment of the older adult population. Restoring maximum function is the approach to rehabilitation. Services offered Include:

- ◆ **Physical Therapy**– This service helps residents develop, restore, and maintain maximum movement and functional ability while recovering from an illness or injury.
- ◆ **Occupational Therapy**– This service includes the use of various treatments to develop, recover or maintain daily living skills.
- ◆ **Speech-Language Therapy**- This is a treatment that focuses on improving a person's ability to communicate effectively and eat safely.

Resident Rooms

- ◆ Resident rooms may be personalized with favorite things such as a recliner, pictures, and other mementos.

- ◆ A television is provided by the facility with cable connection.
- ◆ Telephone hookup is available, however arrangements will need to be made for installation and payment.
- ◆ Rooms must be organized safely, so that movement around the room may be done without risk of tripping and/or falling.

Laundry

- ◆ Laundry Service is provided by facility.
- ◆ Each item of clothing should be marked with resident's name. Families shall maintain the resident's wardrobe.
- ◆ Seven complete outfits should be available for residents. Appropriate clothing is usually considered to be slacks, shirts/tops, dresses, sweat suits, sweaters, sleepwear, and underwear. Clothing should be roomy and easy to put on.
- ◆ Clothing should be machine washable and dryable.

Meals

- ◆ Breakfast, Lunch, and Dinner are served daily in the dining room
- ◆ Room trays available for those unable or unwilling to come to the dining room
- ◆ Choice menu options are available and open breakfast is served daily from 6:30am-8:30am