

*"Providing Seniors Quality Christian
Care and Service"*

Davenport Lutheran Home Communities

1130 West 53rd Street

Davenport, IA 52806

1128 West 53rd Street

Davenport, IA 52806

(563) 391-5342

www.lhaa-e.org

Diane Gloede, COO, Administrator

Jennifer Hayes, R.N., Director of Nursing

Linda Cagle, L.P.N., Assisted Living Nurse Manager



**THE LUTHERAN
HOME for the AGED
ASSOCIATION-EAST**



**ASSISTED LIVING
APARTMENTS**

October 2022

TENANT PROFILE FOR ELIGIBILITY ASSISTED LIVING

A physician must state that a resident is capable of living in an apartment-like setting with the personal care services as outlined.

Must meet or exceed standards of eligibility to continue residency in the assisted living environment.

The resident must be at a cooperative level. Must be active in making his/her own choices. Must be able to reason, plan and organize daily events.

The resident must be able to evacuate the building from their apartment in case of fire or other emergency without the assistance of staff and within a thirteen minute period.

The resident can ambulate alone or with an assisted device, i.e.: cane, walker, or wheelchair. Must be able to independently transfer from bed to wheelchair, wheelchair to toilet and vice-versa. The resident must also be able to independently go from their apartment and back again.

Able to feed oneself with appropriate table manners.

Must be able to dress appropriately.

Must be able to manage own bowel and bladder needs. Takes care of own personal hygiene and wears incontinent protection as necessary.

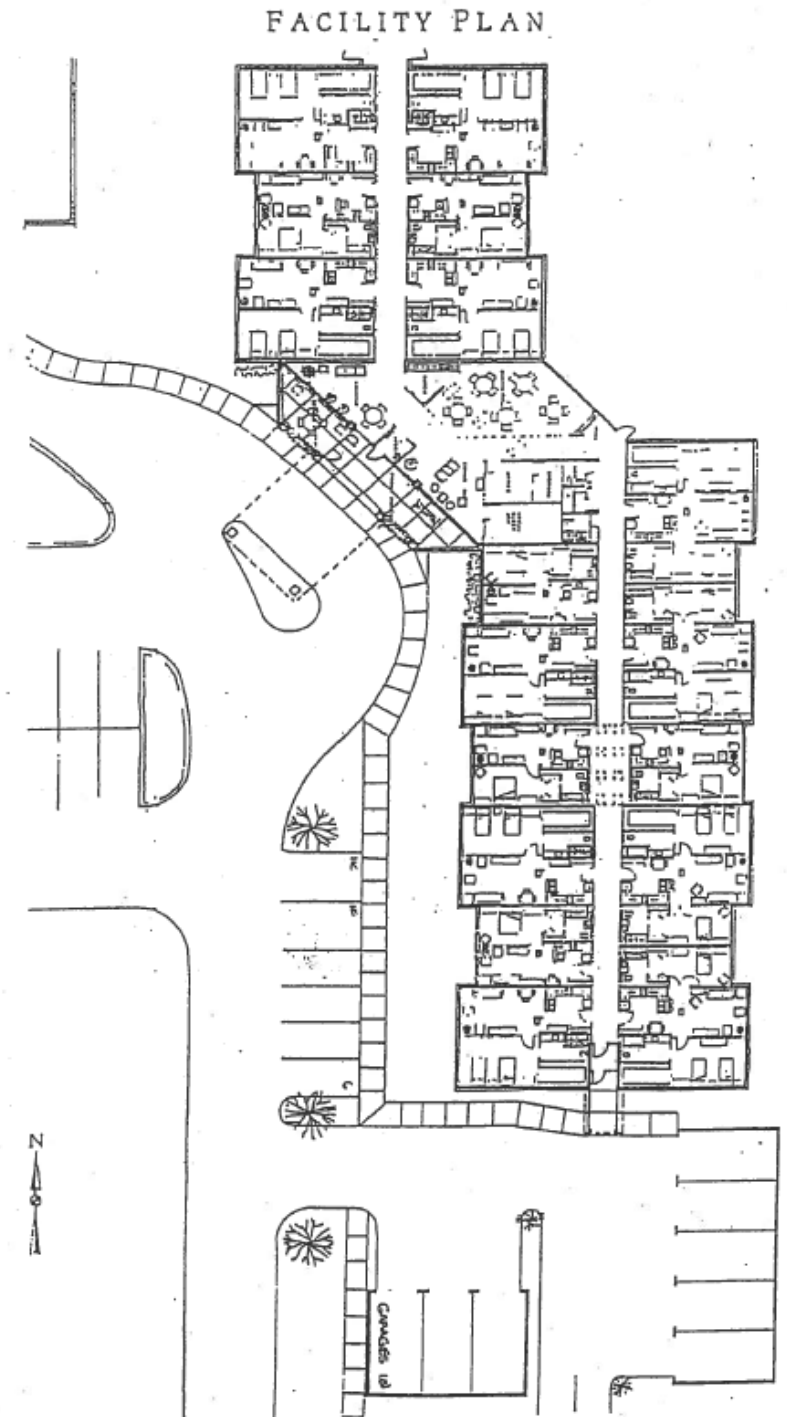
Resident may require minimal assistance getting in and out of the shower, perhaps assistance with shampooing and monitoring while they are bathing.

Staff may remind, monitor or administer of medications.

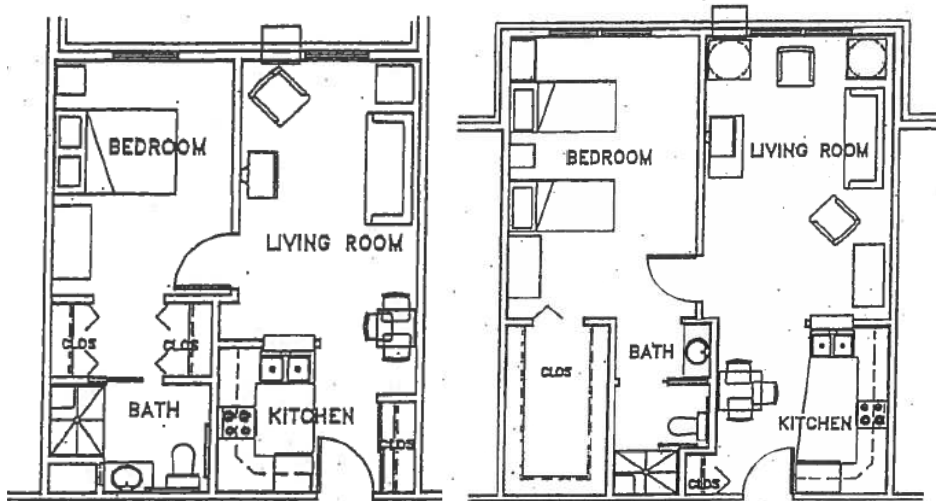
Able to hear well enough to hear an alarm and to respond appropriately to an emergency.

Able to see well enough or be adequately adjusted to a vision impairment or loss to enable the resident to find their way in the facility without assistance from staff.

Not require 24 hour per day monitoring or protective oversight but may require occasional, daily monitoring.

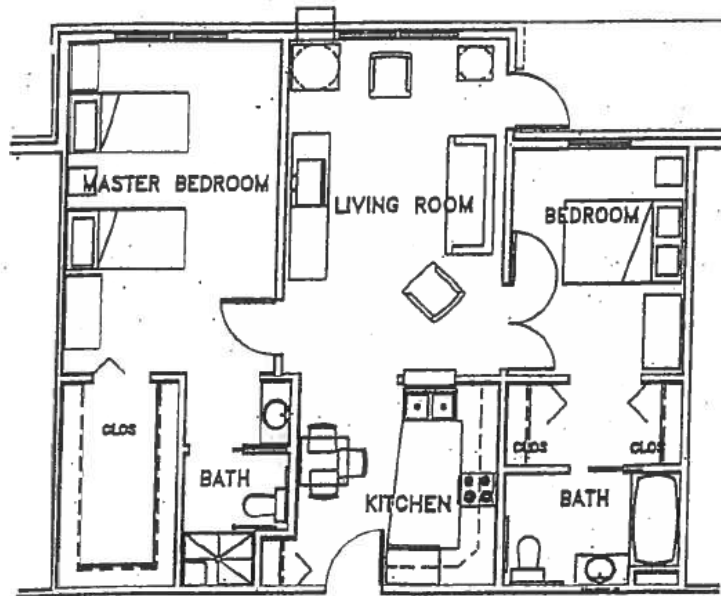


ASSISTED LIVING UNITS



UNIT A
(480 S.F.)

UNIT B
(720 S.F.)



UNIT C
(960 S.F.)

**ASSISTED LIVING APARTMENT
MONTHLY (BASE) RENTAL FEE**
(Effective date October 1, 2021)

Many of our amenities and services are included in the monthly rent, while others will be charged separately. Our basic services cannot be substituted or deleted:

AMENITIES INCLUDED IN THE BASE RENTAL FEE:

- 24 hour emergency call system
- Safety features in bathrooms
- Smoke detection system
- Window treatment
- Carpeting
- Individual heat and air control
- Personal laundry facility within the Apartment Complex
- Dining and Lounge area
- Private Mailboxes
- Cable T.V.
- Utilities (Gas, Water, Electricity, Garbage Pickup)
- Lawn care & snow removal
- Interior and Exterior maintenance
- Maintenance of common areas

Non-refundable processing fee for Davenport Assisted Living is \$1500.00.

The monthly fee is listed below:

	1-BEDROOM	DELUXE	2-BEDROOM
Base Rental Fee			
Level 1	\$3354.00	\$3659.00	\$4069.00
Level 2	\$4433.00	\$4738.00	\$5148.00

SERVICES INCLUDED IN THE RENTAL FEE

Continental breakfast

Dinner and Supper

Housekeeping - provided weekly.

Laundry of flats and towels - towels and linens can be laundered once a week

24-hour emergency nursing care - an emergency system will be used for each individual person. Each tenant wears a button to activate the system.

Health screening monthly - will be performed by the Home Health Care Nurse to assess the residents general health needs and to make sure each resident is receiving the proper care and health maintenance.

Bath assistance - can be provided two times a week.

Dining room - may be used for special occasions.

Transportation - available weekly to grocery store.

Spiritual Care - Worship services, Bible Study, Chaplaincy services are all provided.

Activities - as many activities at the Lutheran Home may be attended as desired.

Staff available 24-hours per day.

ADDITIONAL AMMENITIES INCLUDED IN LEVELS OF CARE

Barber/Beautician - Residents are welcome to use the beauty shop located in the Nursing Facility as the schedule allows.

Supper/Guest meals - can be obtained with 24-hour notice.
Holiday guest noon meals with seven day notice.

Performed by Home Care Aide

Assist with dress/undress

Additional housekeeping

Transportation - special requests (i.e.: doctor's appt.)

Laundry of personal clothing

Correspondence assistance

Supportive personal care

Pharmacy

Skilled Care Provider

Performed by Apartment Nurse

Nursing assessment for problems

Medication set up for medications

Coordinate lab and other services

Diabetic set up

Injections

Catheter care

Enemas

Wound and dressing care

Assistance with appointments

Help with incontinence problems

Flu shots

A copy of the Occupancy Agreement is available upon request.